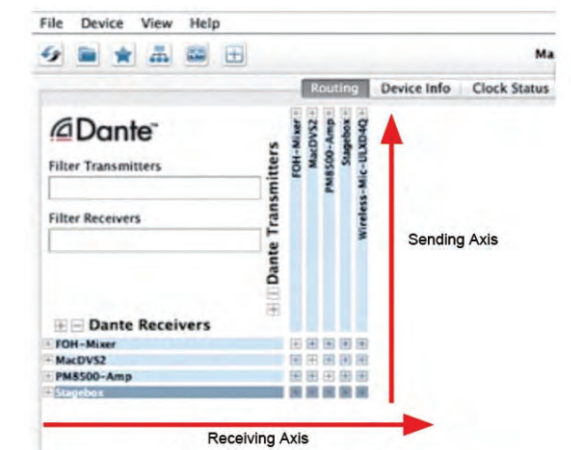
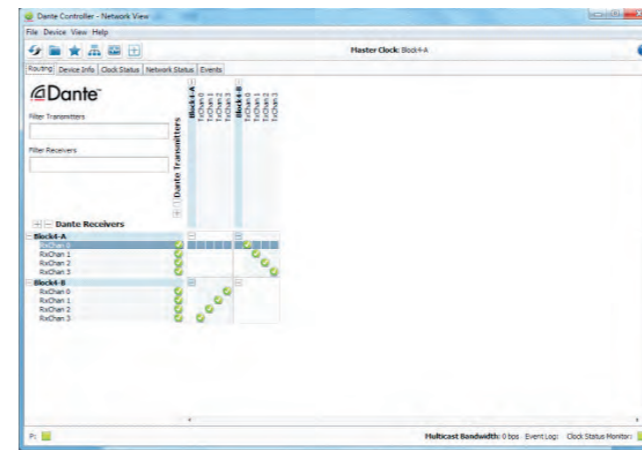




Block4+ is a Dante-enabled IP digital audio switch combining 4 input and 4 output. Dante is a network protocol, which bases on the three-layer IP network technology, provides a low latency, high precision and low cost solution for point-to-point audio connection. Dante technology can apply to transmitting high precision clock signal and audio signal and can perform complex routing in Ethernet(100M or 1000M), to ensure a perfect sound effect; to solve the problem of complicated wiring of traditional audio transmission, reduce the cost. Adapt to the existing network, do not need to do special configuration. Block 4+ can be used with routers without PoE and with PoE power supply. When connecting to ordinary routers without PoE power supply, Block 4+ requires an external power supply.

System Connection Diagram



We need a Dante-enabled mixer, wireless microphone and power amplifier. All the equipment need to connect to the current switch board, all the Dante devices set to default. The connection is not complicated and no need professional knowledge, before connecting to the network switch board, just use the common CAT5 or CAT6 network cable to connect the primary port of Dante devices, then connect to any port of the 100M or 1000M switch board, (Remark: Dante can not run in WiFi environment, wired it relies on the stable network environment to transmit perfect audio)

Key Features

Flexible Configuration

- Connect directly to network via Ethernet cable-no need for expensive audio cable or soldering
- Powered by network PoE: PoE IEEE802.3af standard
- Easy operation, simple mechanical gain adjustment switch, clear working indicator
- 48V phantom power

Flexible Expansion

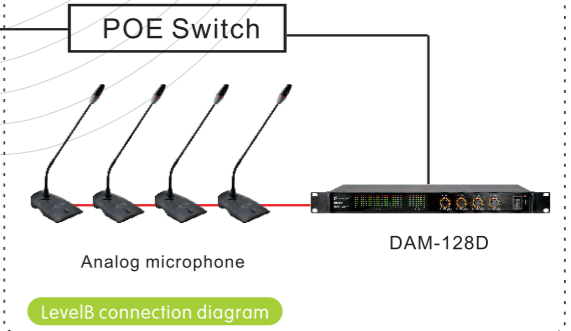
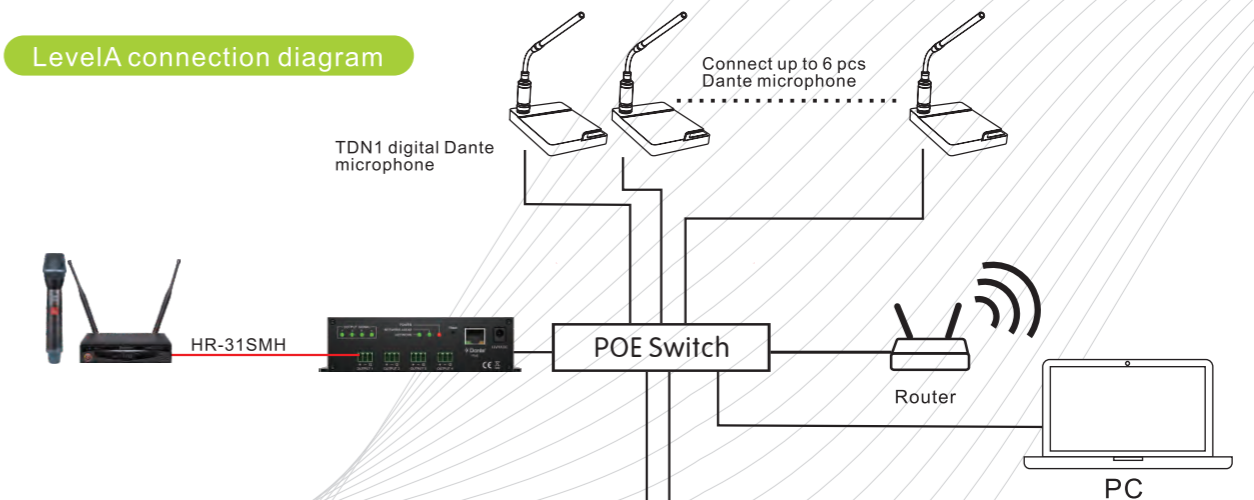
- 4-channel analog audio output, equip with four indicator
- Equip with network connection indicator, network audio indicator, power indicator, reset switch
- RF anti-interference design.
- Solid alloy structure.

Product Specification



Weight:	0.5KG
Audio Interface:	Standard 3.81mm pitch plug type connection terminal
Audio Frequency Response:	20Hz~20KHz +2dB
Dynamic Range:	98dB, Analog to Analog
Input channel gain:	Nominal : LINE / AUX / +15dB / +30dB Gear level : -10dBV / 0dBV / +15dBV / +30dBV Max input : +16dBV / +7dBV / -8dBV / -22dBV 48V status : OFF / OFF / ON / ON
Input impedance:	2.2kΩ
Output impedance:	600Ω
Output level:	+16dBV MAX
Output channel:	AUX: +10dBV
Power consumption:	4W
DANTE Network:	RJ45 connector, CAT5E or CAT6 cable over 100 Mbps
Dimension(mm) :	166(W) × 83(D) × 44.6(H)
Power supply :	PoE IEEE802.3af standard, DC 12V/1A DC power supply

LevelA connection diagram



(Multi-level audio transmission application)

Audio Cable
Other Cable